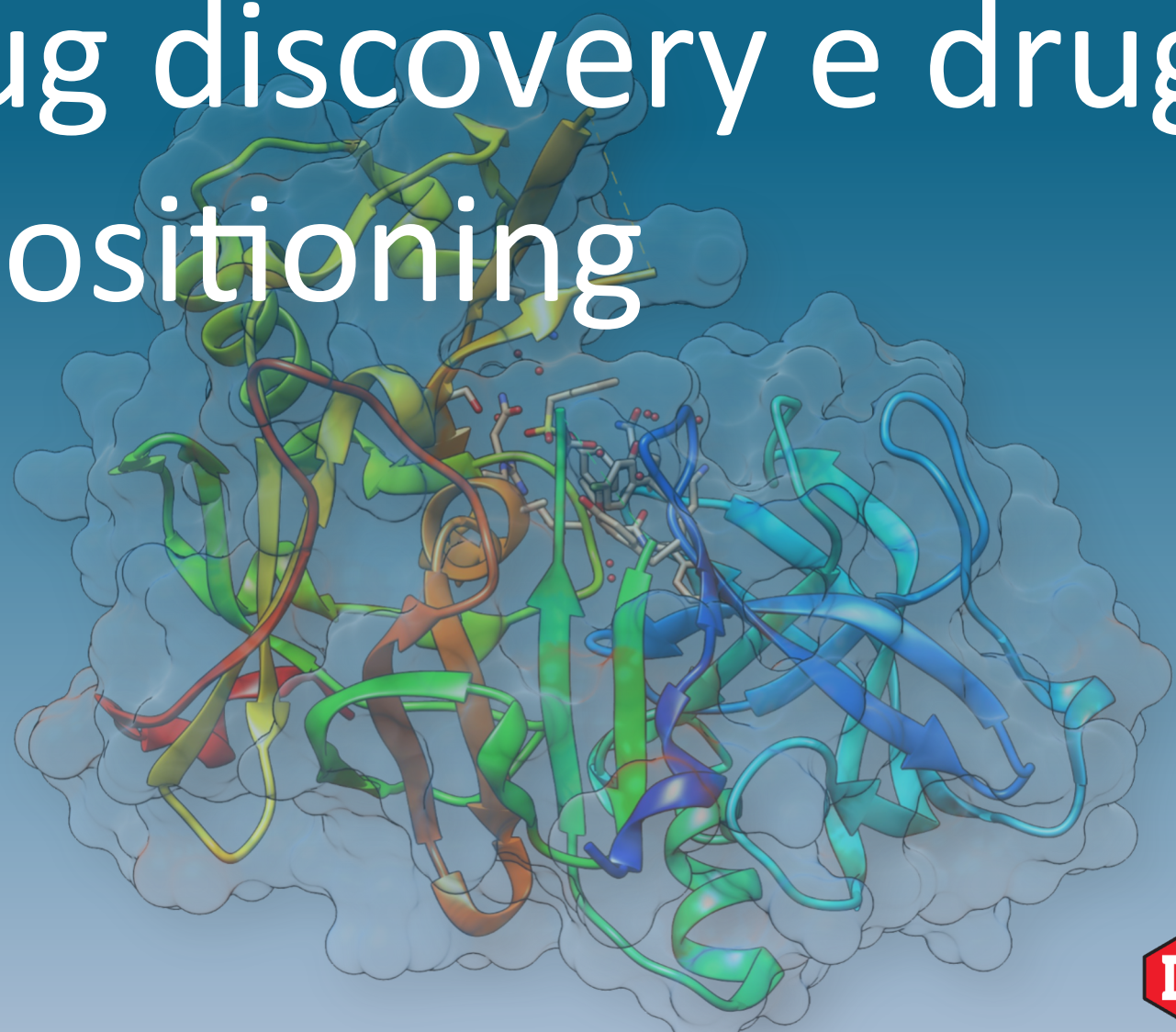


“Model to Cure”

Big data, drug discovery e drug repositioning



Andrea R. Beccari, PhD
Senior Director, EXSCALATE
Dompé Farmaceutici SpA



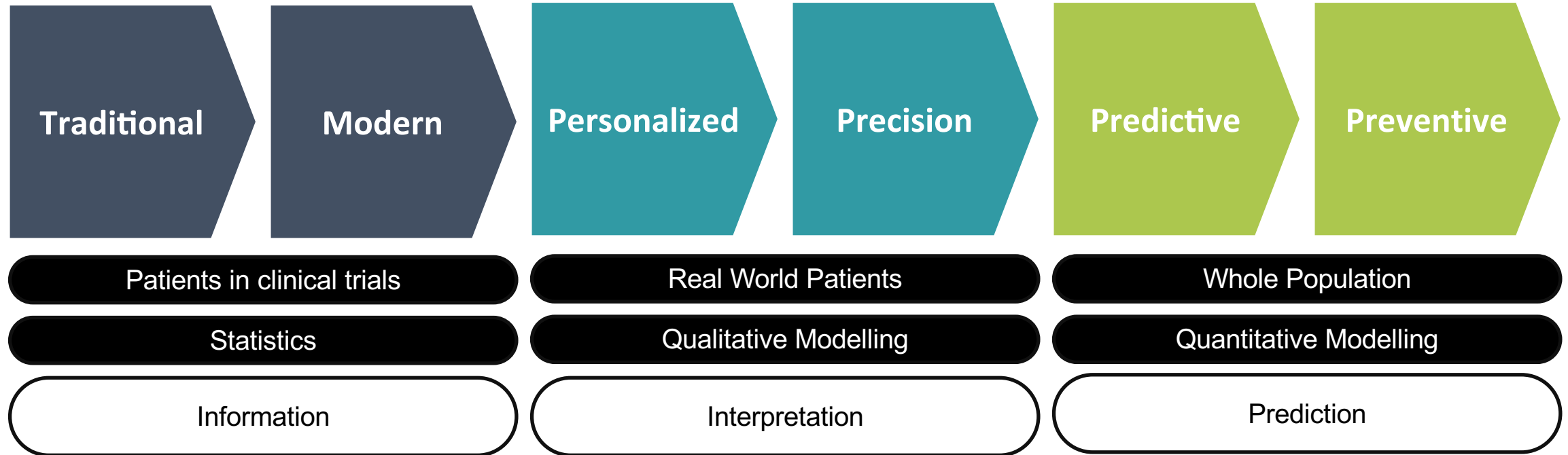
Evolution of medicine

Where we really Are ?

(Clinical) Trial
&
Error

Disease treatment and prevention
that considers individual
variability in genes, environment,
and lifestyle for each person

Identify population at risk of
developing a disease, thereby
enabling either prevention or early
treatment of that disease



EXSCALATE Platform

Infectious disease

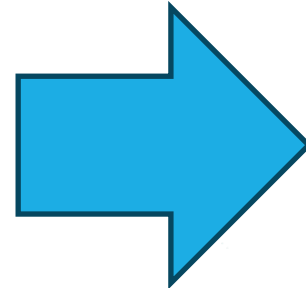
Establish & maintain an infrastructure for monitoring and early response future pandemics

Successful Phase II Clinical Trial
Raloxifene

Explanation of Thrombogenic &
myocarditis

New Generation of Safer
Vaccines

EXSCALATE
4COV



**Antiviral Therapeutics for
Rapid Response Against
Pandemic Infectious
Diseases**

AVITHRAPID

Nature - Relevance of Spike/Estrogen Receptor- α interaction for endothelial-based coagulopathy induced by SARS-CoV-2

Science - The SARS-CoV-2 spike protein binds and modulates estrogen receptors

The Lancet - A phase 2 randomized, double-blinded, placebo-controlled, multicenter trial evaluating the efficacy and safety of raloxifene for patients with mild to moderate COVID-19

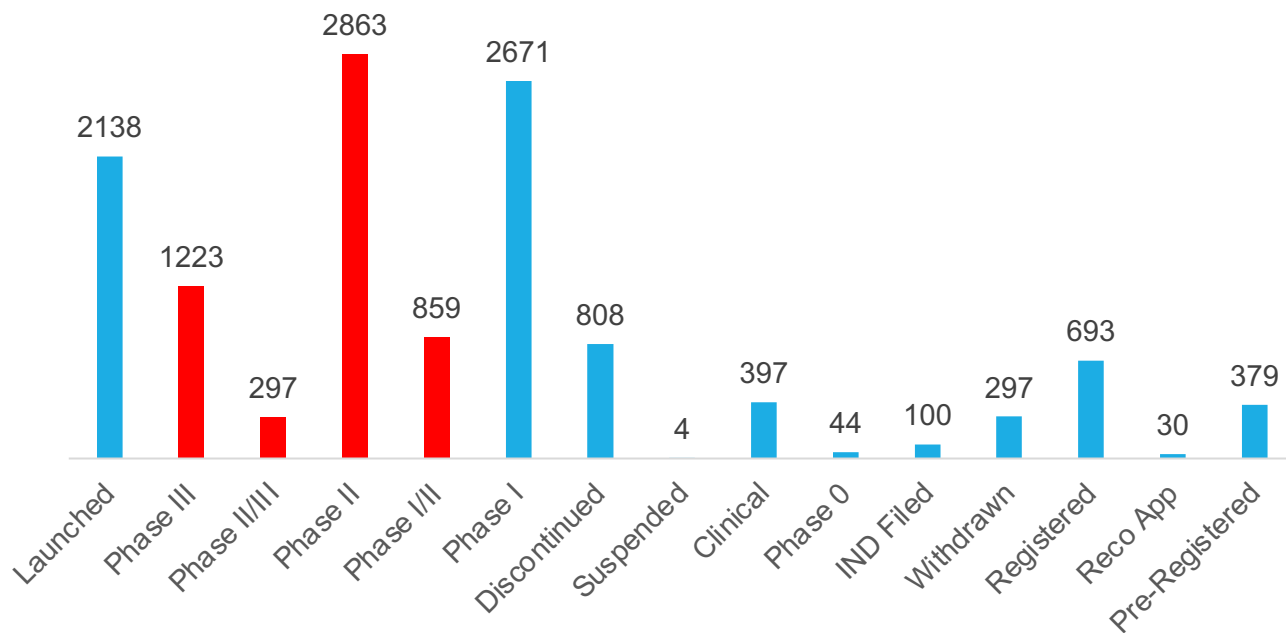


EXSCALATE Platform

European Drug Repurposing Hub



Medicines must be considered a heritage of humanity



- Minimize time to patient
- Address unmet medical needs
- Reduce the Safety Risks
- Reduce the Costs
- Reduce the Emission and Pollution
- Democratize Health Science





Thank You for your
Kind Attention !

Any Question ?



exscalate.com

